



Maynewater Lane, Bury St. Edmunds, Suffolk, IP33 2AB

Rent - £1,750 PCM Deposit - £2,019

A charming three-bedroom character townhouse ideally situated within easy reach of the historic town centre and local amenities.

The accommodation comprises an entrance lobby, sitting room with decorative fireplace, fitted kitchen/dining room with dishwasher and space for appliances, two double bedrooms and family bathroom on the first floor, and a spacious third bedroom on the second floor.

- THREE BEDROOM TOWN HOUSE
- LOCATED IN THE CENTRE OF BURY ST EDMUNDS
- ENTRANCE LOBBY, SITTING ROOM
- THREE DOUBLE BEDROOMS
- EPC D, COUNCIL TAX B
- GARAGE & PARKING TO REAR
- MODERN KITCHEN & BATHROOM WITH SHOWER OVER BATH
- KITCHEN/DINING ROOM WITH DOORS TO GARDEN
- REAR GARDEN LAID FOR EASE OF MAINTENANCE
- GAS HEATING

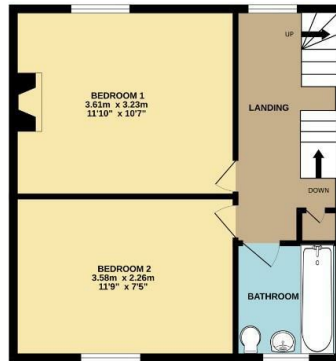


Council Tax Band: B - EPC Rating: D 60

GROUND FLOOR



1ST FLOOR



2ND FLOOR



Whilst every attempt has been made to ensure the accuracy of the floorplan contained here, measurements of doors, windows, rooms and any other items are approximate and no responsibility is taken for any error, omission or mis-statement. This plan is for illustrative purposes only and should be used as such by any prospective purchaser. The services, systems and appliances shown have not been tested and no guarantee as to their operability or efficiency can be given.
Made with Metropix ©2024

